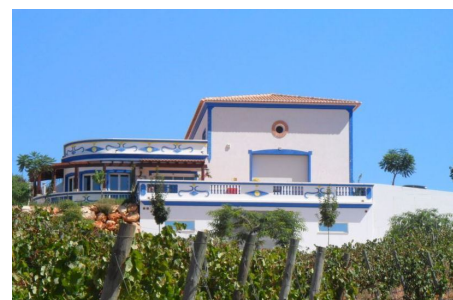
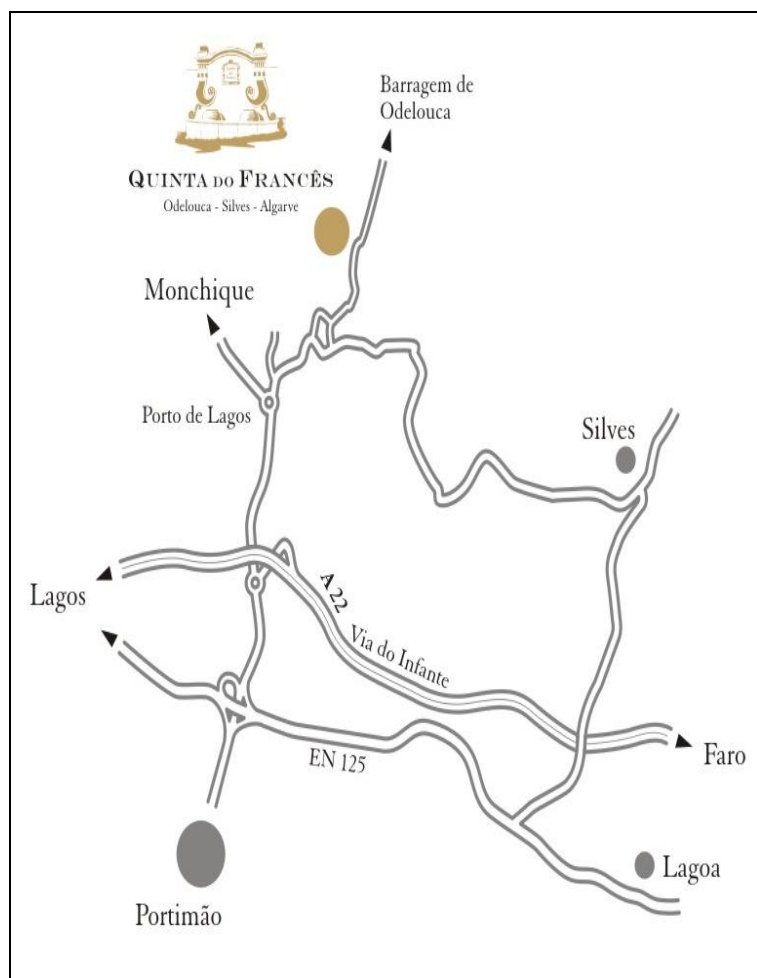




QUINTA DO FRANCÊS



DIRECTIONS TO THE WINERY

On the **A22** take the exit **Portimão-Monchique**. On the **N125** follow **Monchique**.

On the roundabout for the A22, follow **Monchique**.

In Porto de Lagos, on the roundabout, turn right, direction **Silves – Barragem do Arade**.

Then on the second left, direction **Barragem de Odelouca**. There is a sign indicating the Winery Quinta do Francês.

You will find the entrance of the winery at more or less 1 km on your left side.

QUINTA DO FRANCES ESTATE FAMILY - PATRICK AGOSTINI, Lda

Sítio da Dobra Cx P 862H Odelouca - 8300-037 SILVES – ALGARVE - PORTUGAL

GPS: 37° 13' 1.52" N 8° 30' 32.53" W

Be aware that some GPS don't take you to our winery! We recommend you to follow the directions.

Tel: (351) 282 106 303

quintadofrances@gmail.com - www.quintadofrances.com

www.facebook.com/QuintaDoFrancesWinery